



Data Sheet

AS/400 to Windows Printing Solutions

- » RPM Select/Elite
- » Lower printing costs
- » Easy Connectivity
- » More convenience
- » More flexibility

RPM Remote Print Manager connects IBM-based data with Windows-based printers and systems

- ◆ RPM includes a full set of easy-to-use features for simplifying document workflows, connecting disparate platforms, and lowering printing complexity and costs.
- ◆ If you are interested in IPDS-to-Windows printing, check out [ExcelliPrint](#).

IT managers and system administrators have long struggled to make AS/400-based data available in Windows environments. With RPM Remote Print Manager, AS/400 host data can be sent to Windows-based printers or accessed on Windows-based systems. The result: lower costs, more flexibility, and more convenience.

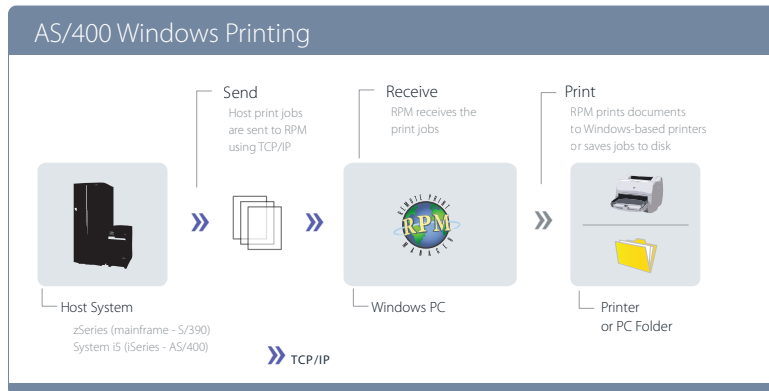
INTRO The challenge of freeing host data and making it available on other platforms, namely Windows, is easier and less expensive than you might think. And using host data within Windows environments provides a number of advantages:

- » **Increased data availability:** When key players have access to host data, they can make better decisions and incorporate the data in key business processes.
- » **Connected cross-platform applications:** Peripheral applications often reside on Windows PCs or servers, and these applications need access to the data residing on the host.
- » **Lower print costs:** Because Windows-based printers are common, inexpensive, and relatively easy to maintain, printing AS/400 data to them lowers printing costs.
- » **Increased print convenience and flexibility:** By placing Windows-based printers in key locations, printouts are easy to pick up, and new printers can be added to the network when needed.

Cross-Platform Printing & Workflows

iSeries™ (AS/400®)
zSeries® (OS/390®) → Windows®
UNIX® (Linux™, AIX®, SCO®, Solaris®)
Other (Mac, VMS, Windows)

Simple. Affordable.
RPM Remote Print Manager.



Documents are sent from the IBM host to RPM over TCP/IP. RPM receives the jobs and passes the documents to Windows-based printers or to file. If necessary, RPM performs data transformations or other operations.

RPM ADVANTAGES Using RPM in your AS/400 host environment is easy and advantageous:

- » **Minimum host-side modifications:** Putting RPM in place requires little change to the AS/400. In most cases, the host printer simply needs to be redirected to RPM's IP address.
- » **Advanced formatting and finishing capabilities:** Host data can be formatted for a specific Windows printer allowing full use of all printer finishing functions, including double-sided printing, stapling, hole punching, n-up, watermarks, etc. Margins, fonts, and text compression are also supported in RPM, including other data massaging options like PCL removal, ASA/Fortran, CR to CR/LF, EBCDIC conversion, and SCS to ASCII.
- » **Simplified print job management:** Managing print jobs in the Windows environment reduces host system expenses.

RISK-FREE TRIAL An [RPM trial](#) is available for immediate testing in your AS/400 print environment, and Brooks provides free pre-sales technical support for help along the way. Find out today what RPM can do for you.

RPM and AS/400s in the Real World

Replace SNA A large state agency, by replacing green screens with PCs and emulators, and using TCP/IP in place of SNA, has saved millions of dollars directing host print jobs to locally attached parallel cable and USB-attached printers. Printouts are conveniently available and printer costs are significantly lower.

Host Label Printing A hospital information system provider creates labels from AS/400 healthcare applications. Host data is sent to RPM, which performs transformations: SCS is converted to ASCII, orientation is changed from portrait to landscape, font is changed to Tahoma 10pt, lines per inch are changed to 8, and page margins are altered. Patient or pharmacy labels are then printed correctly to a Windows-based local or network thermal label printer.

Banking Archives At a national bank, RPM receives jobs from an AS/400, converts SCS to ASCII, and saves the transformed jobs to disk. A storage solution then picks up the jobs for processing and archiving.

Convenient Delivery A wholesale company uses RPM for accounting: an AS/400 holds accounting worksheets which are sent to RPM on the accounting manager's PC. The worksheets are saved in a folder on this local machine and the manager then places the worksheets in other folders or distributes them to others. The AS/400-side process is simple: the OUTQs are pointed to RPM.

University Printing A registrar's office uses RPM Elite for printing transcripts and other documents. Print jobs go to line printers sent from the host system, but there are PCL escape codes that need to be taken out and others inserted by RPM. Also, depending on the formatting that needs to be done, jobs are directed to different queues, then the jobs go to 1 of the 22 printers in the office.

Compliance Records An investing firm receives transaction records from a vendor. The jobs arrive on 30 different IP addresses, with each address corresponding to a queue within RPM. RPM saves each record to disk for auditing purposes.