

RPM Installation and Setup Guide for Windows 2000, XP, and Server 2003

Prior to installing RPM on your computer, you must log in as the **Administrator** account or another account that is a member of the **Administrators** group.

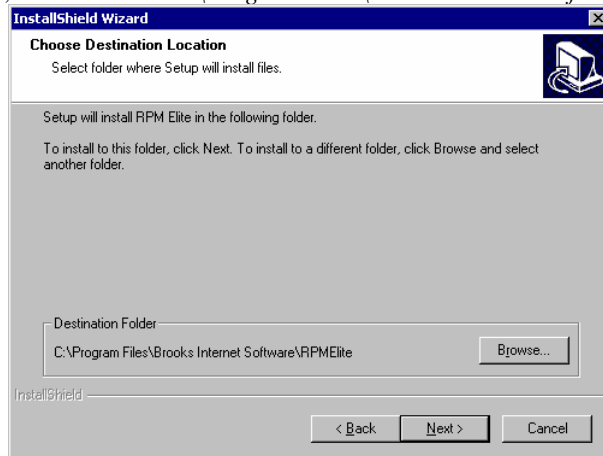
Note: RPM requires Windows NT 4.0, 2000, XP, or Server 2003. Service pack 6a is required on Windows NT. We recommend installing the latest security patches for your operating system.

Step-by-Step Installation

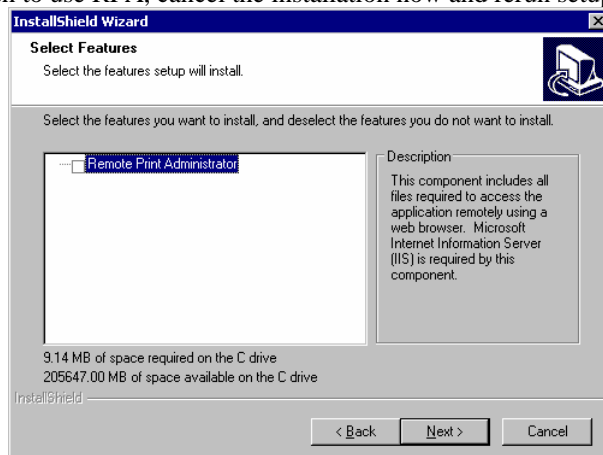
RPM is distributed with a Windows setup program, which guides you through the installation process on your computer. The setup program installs and configures all files required to operate the software.

Here is the step-by-step installation process.

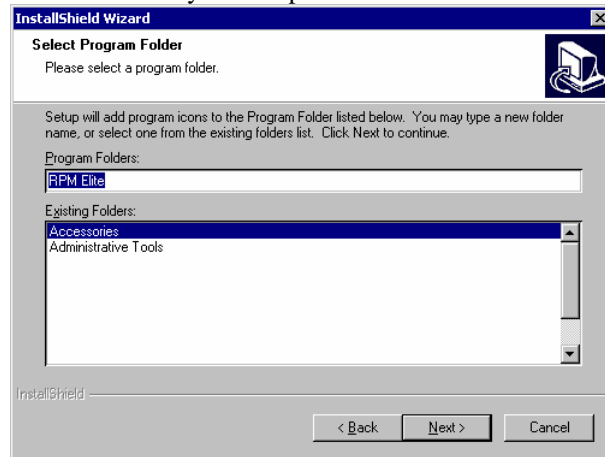
1. Run the setup program downloaded from our [website](#) or the single file executable located on the installation CD.
2. At the Welcome screen, click *Next*.
3. **License Agreement** After reading and agreeing to the terms of the end-user license agreement, choose *I accept the terms of the license agreement* and click *Next* to proceed. If you do not accept the terms, setup will not continue.
4. **Choose Destination Location** Choose the destination folder for RPM and click *Next*. The default location is *RPMElite* or *RPMSelect*, a subfolder of *C:\Program Files\Brooks Internet Software*.



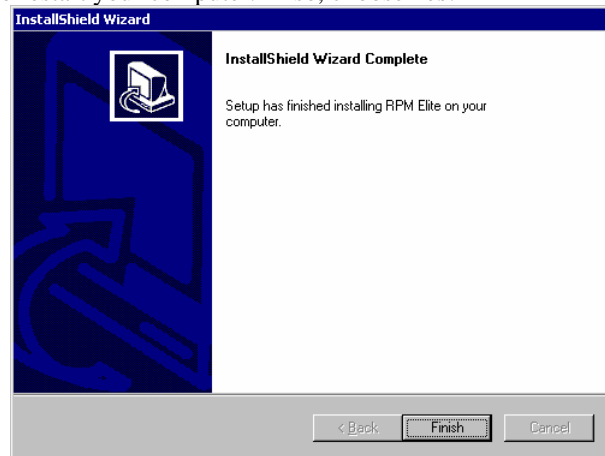
5. **Select Features** This step allows you to install the Remote Print Administrator (RPA) module. This module allows you to configure RPM remotely using a web browser and is available only with RPM Elite. **Note:** This step is skipped if Internet Information Services (IIS) is not installed on your computer. If you have not yet installed IIS and wish to use RPA, cancel the installation now and rerun setup after IIS has been installed.



6. **Select Program Folder** Choose a program folder. The default program folder is *RPM Elite* or *RPM Select*. When you click *Next*, RPM will be installed on your computer.



7. **InstallShield Wizard Complete** Click the *Finish* button to complete the installation. In certain circumstances, setup may prompt you to restart your computer. If so, choose *Yes*.



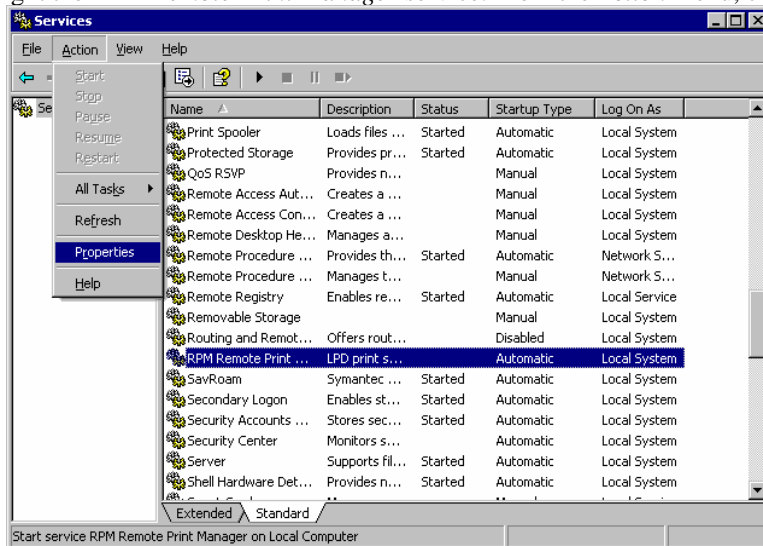
RPM is now installed on your computer. The next time Windows is restarted, the RPM service will start automatically. There is no need to place a shortcut to RPM in your startup folder.

The RPM Service Account

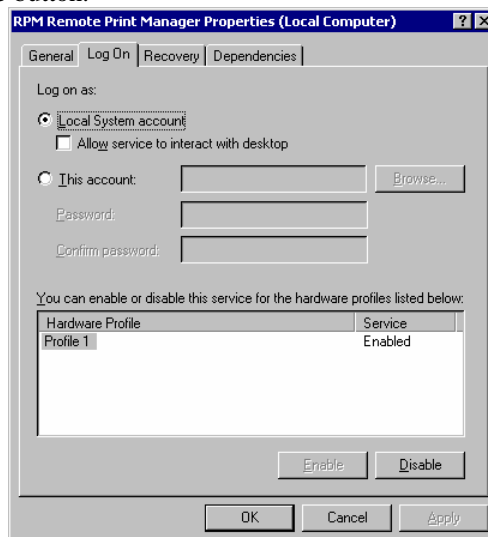
By default, the RPM service is configured to run as the local **SYSTEM** account. This account is a special Windows account that has full access to your local computer only. If your security policy requires, or if you need access to shared resources (printers or folders), you must configure the RPM service to run as a user account, preferably a member of the **Administrators** group or the **Network Service** account, with permissions to the shared resources.

1. From the *Start* menu, point to *Settings* and choose *Control Panel*. Open the *Administrative Tools* folder and then the *Services* utility. Note that when in *Category View* on Windows XP or Server 2003, the *Administrative Tools* folder is found under *Performance and Maintenance*.

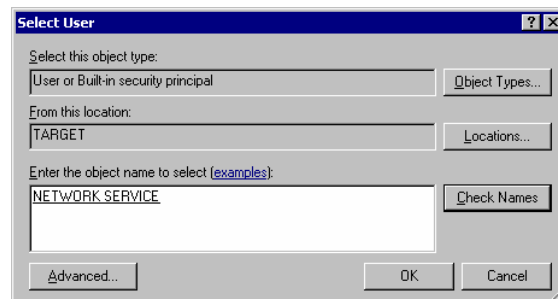
2. Locate and highlight the *RPM Remote Print Manager* service. From the *Action* menu, choose *Properties*.



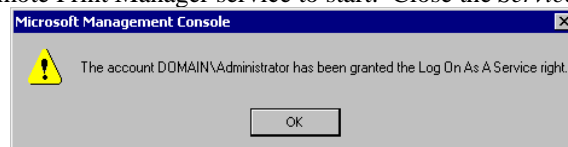
3. In the *General* tab, press the *Stop* button and wait for the RPM service to be stopped. In the *Log On* tab, select *This Account* and press the *Browse* button.



4. In the *Select User* dialog, enter your desired user account and press *Check Names*. The user account will be underlined if you have entered a valid user account. If not, select the appropriate location in *From this Location*, click *Advanced*, then *Find Now*. Highlight your account from the resulting list and press *Ok* to dismiss the *Select User* dialog.



5. Enter the account's password in both the *Password* and *Confirm Password* fields. Press *Apply* to accept the changes. If prompted with the message below, press *OK* to continue. Open the *General* tab, press the *Start* button, and wait for the RPM Remote Print Manager service to start. Close the *Services* window and the *Control Panel*.

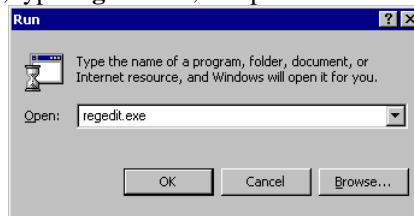


Write access to the Registry

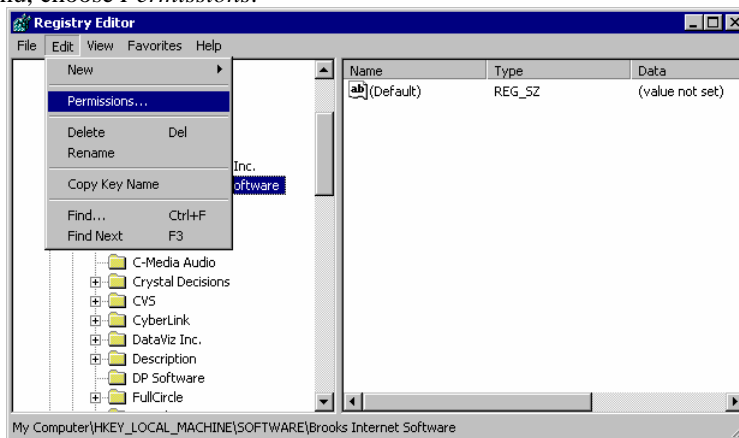
Note: If you use the **Administrator** account or another account that is a member of the **Administrators** group, you can safely skip this section. By default, all administrator accounts have full access to the Windows Registry.

Note: This section will assist you in modifying the Windows Registry using the Registry Editor (regedit.exe). Improper use of the registry editor could damage your system or make it inaccessible. Use the Registry Editor at your own risk.

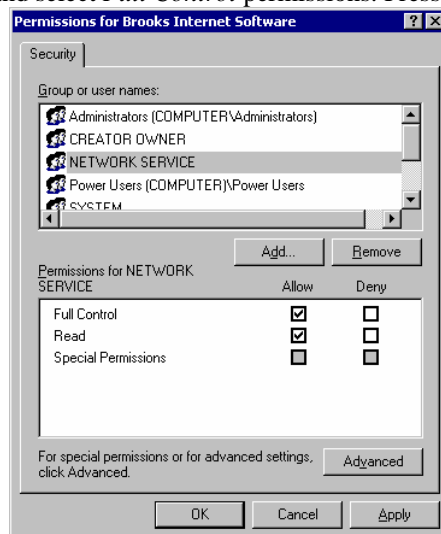
1. Choose *Run* from the *Start* menu, type **regedit.exe**, and press *OK*.



2. Highlight the following key: **HKey_Local_Machine\Software\Brooks Internet Software**. Note that registry keys are represented by folder icons (📁) similar to Windows Explorer.
3. From the *Edit* menu, choose *Permissions*.



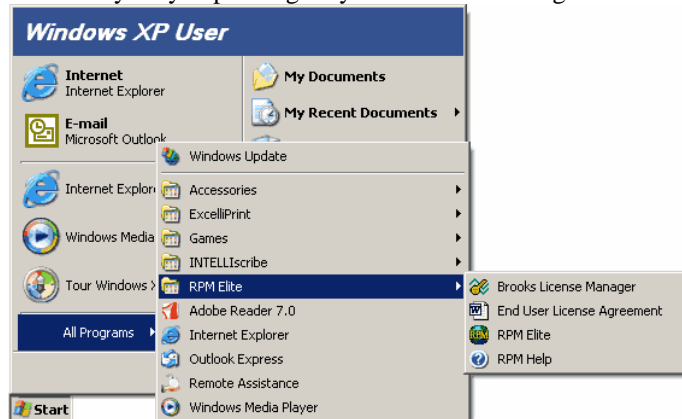
4. Add the RPM service account and select *Full Control* permissions. Press *OK*.



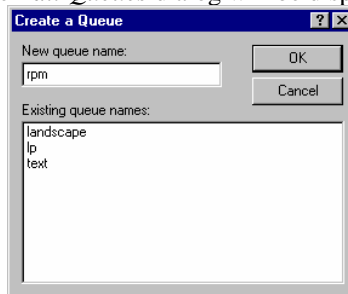
Configure RPM

1. Now that the **RPM Remote Print Manager** service has been installed and configured, you must configure your queues. To open the RPM User Interface (UI), open the *Start* menu, point to *Programs* or *All Programs*, then the RPM Elite (or RPM Select) menu and click the *RPM* shortcut.

Note: Your program folder may vary depending on your selection during installation.

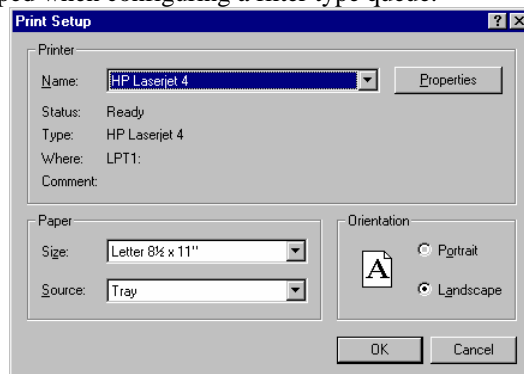


2. When starting RPM for the first time, or when no queues exist, the *Create a Queue* dialog is displayed. Otherwise, select *New Queue* from the *Queues* menu. Enter a descriptive name; letters, numeric characters, dash (-) and underscore (_) are valid. The *Edit Queues* dialog will be displayed.



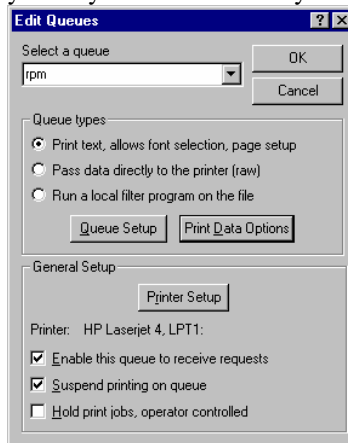
3. Click the *Printer Setup* button and select a printer from the *Names* list. Press *OK* after selecting the appropriate printer.

Note: This step can be skipped when configuring a filter type queue.

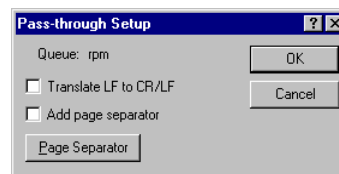
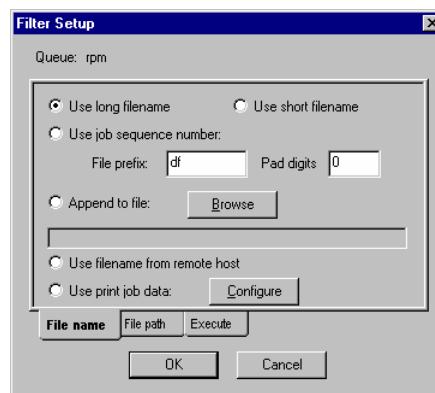
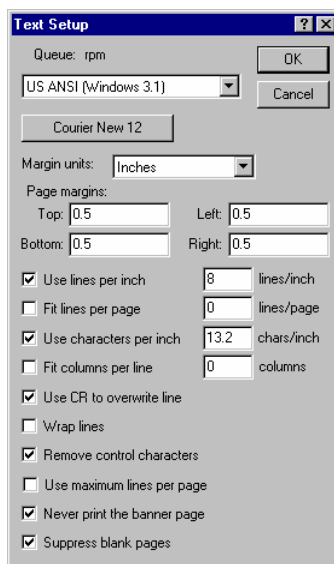


4. The *Edit Queues* dialog will again be displayed. There are three queue types to choose from; your selection depends upon your requirements. Here is a brief description of each queue type.
 - **Text** Use this if you want RPM to read your text and render it using Windows print manager features.
 - **Raw (pass-through)** Use if your print files already contain printer codes or other special controls.
 - **Filter** Save the files to a folder or open the file in another application.

Note: For detailed help, press F1 on your keyboard at this or any other dialog.



5. Press the *Queue Setup* button to access the *Text Setup*, *Pass-through Setup*, or *Filter Setup* dialog. Modify any of the settings to support your requirements and press *OK*.



Congratulations, RPM is now installed on your computer.