

# SCO OpenServer 5 Setup Instructions for



These instructions help guide you through configuring a remote printer on SCO OpenServer operating systems. For these instructions, the IP address of the PC running RPM is 192.168.1.53. Contact your system administrator for the IP address of your RPM host.

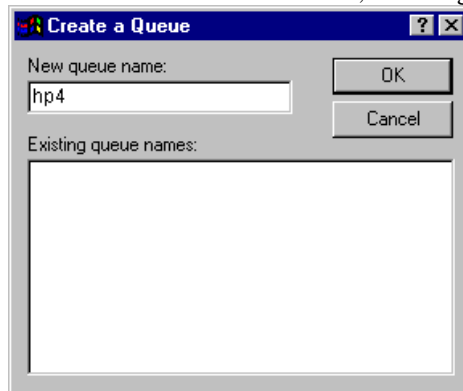
**Note:** SCO Unix is a System V style Unix, however, RPM emulates a BSD style Unix LPD. You must configure SCO Unix to use the BSD printing facility. The System V enhancements to LPR/LPD are not included in RPM.

---

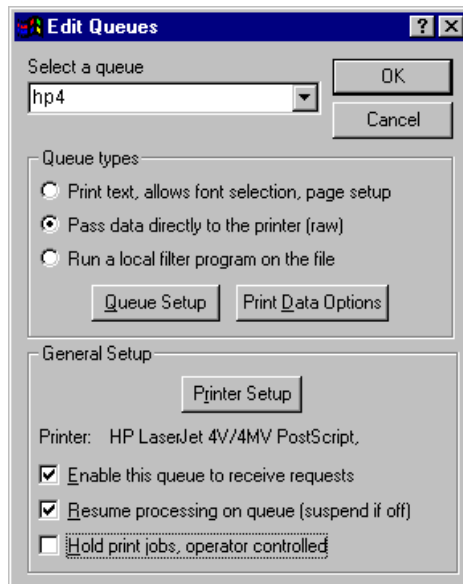
## Creating a Queue in RPM

---

1. Choose "New Queue..." from the "Queues" menu in RPM.
2. Type the name of the queue you wish to create. For these instructions, I'm using 'RPM'. Now press OK.



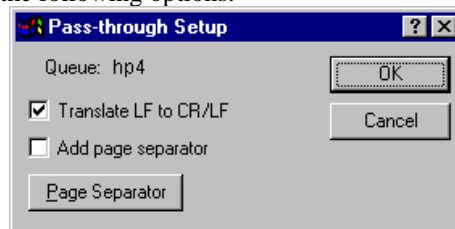
3. In the "Edit Queues" dialog, choose the second queue type: "Pass data directly to the printer (raw)". Now press the "Printer Setup" button.



- In the "Print Setup" dialog, select the printer you wish to print to and press "OK".



- In the "Pass-through Setup" choose the following options:



- Press "OK" on the "Pass-through Setup" dialog and "OK" on the "Edit Queues" dialog to apply changes. You are now ready to start configuring a remote OUTQ on the AS/400.

**Note:** Choose a queue type consistent with your requirements. Try using a Text or Filter queue. All three types can translate LF to CR/LF. To learn more about the queue types, click [here](#).

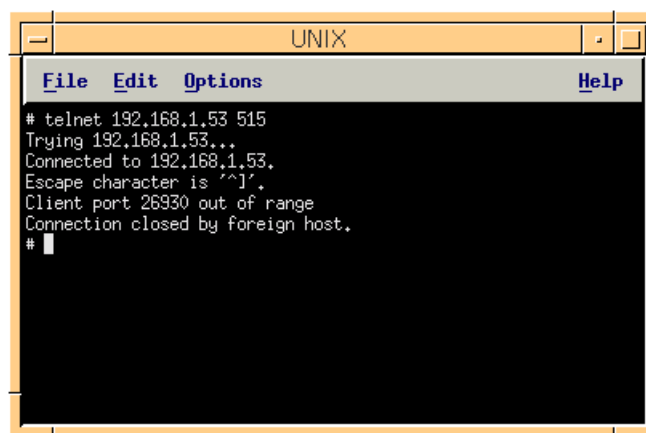
---

## Configuring a Remote Printer on SCO UNIX

---

You are now ready to start configuring a remote printer on your SCO server. Typically, this requires *root* access. Log in as root and follow the instructions below.

- First, perform a telnet test. This test will verify that RPM is monitoring for print data and that there is a connection between the SCO server and the RPM host. From a UNIX command prompt issue the following command. Be sure to substitute the IP address of your RPM host.

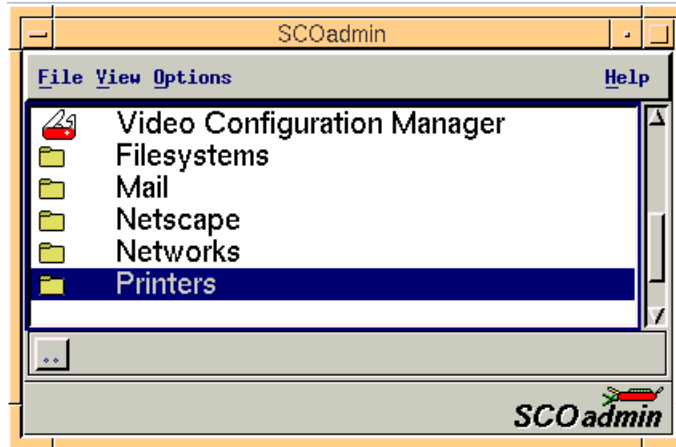


- Next, view the RPM log and verify that the message has been logged. The message should be displayed near the bottom and is a warning stating: "Client port xxxx out of range". If this message was not logged, the SCO server cannot connect to RPM. Check your network settings or firewall for correct configuration.

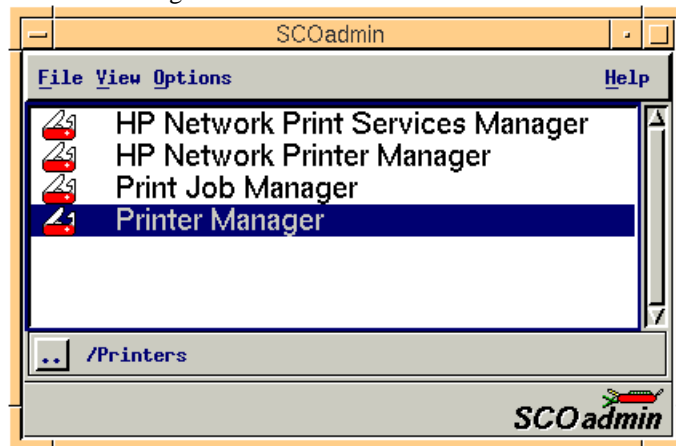
Event	Time	Source	App	Message
421	3/16/2001 10:32:17 AM		RPM	Registered to: Dave Brooks, Brooks Research, Inc., serial
391	3/16/2001 10:32:17 AM		RPM	Starting RPM/2000 4.0 Elite 4.0.0.13
392	3/16/2001 10:32:17 AM		RPM	Socket initialization succeeded. Windows Socket version 1
239	3/16/2001 10:32:17 AM		RPM	Finished queue cleanup
426	3/16/2001 10:32:17 AM		RPM	Licensed to use 99 printers
149	3/16/2001 10:18:07 AM	lpd:515	RPM	Port 515 established connection on socket 548
370	3/16/2001 10:18:07 AM		RPM	Client port 26930 out of range
171	3/16/2001 10:18:07 AM		RPM	Socket 548 closed by client

20010316.log

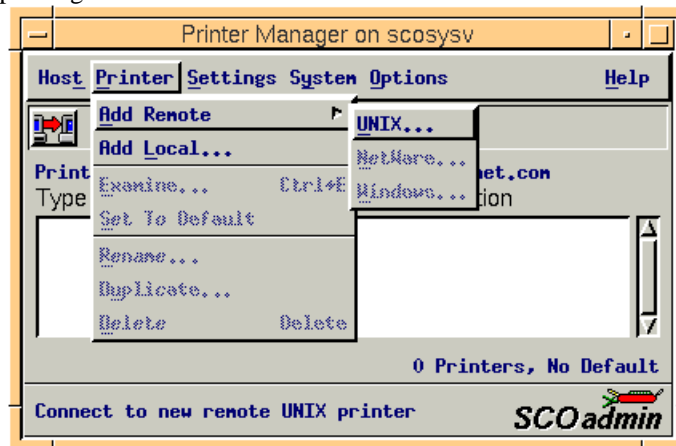
3. Now, run 'scoadmin'. Select 'Printers'.



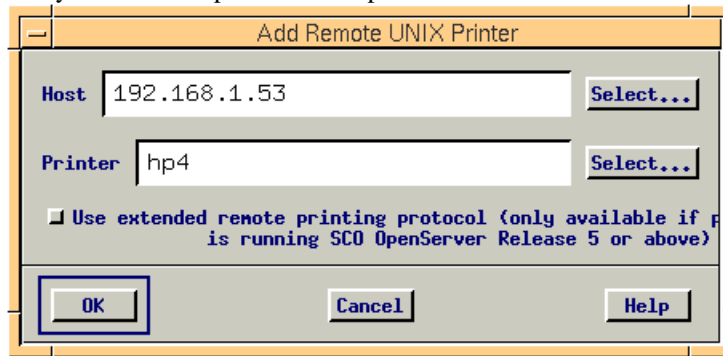
4. In the 'Printers' box, select 'Printer Manager'.



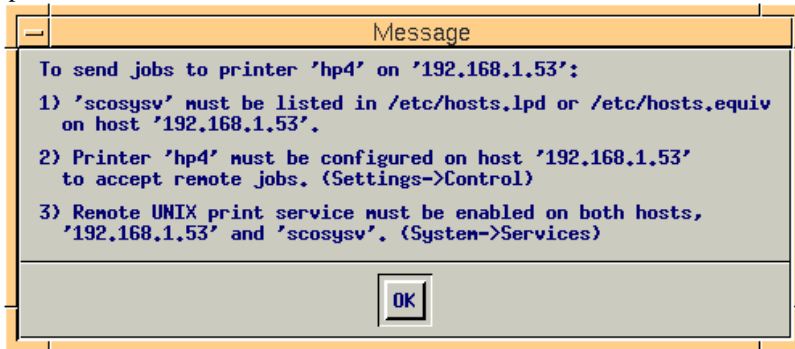
5. From the 'Printer' menu, select 'Add Remote' and 'UNIX'. If remote printing is not configured, scoadmin will ask you if you want to configure remote printing. Select 'OK'.



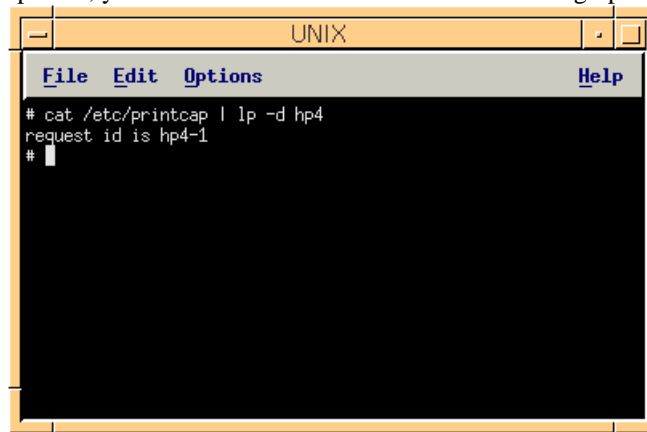
6. Now, add your IP address and RPM queue name here. Remember to substitute your IP address or hostname. Uncheck the box labeled 'Use extended remote printing protocol'. If you forget to uncheck the box, modify the /etc/printcap file by removing the ':ex' for the printer; verify a colon ':' separator is still present.



7. Soadmin will now give you some information about printing pertaining to both the SCO server and the RPM host. Message 1 below must be completed and is not discussed in these instructions..



8. If you would like to test this printer, you can execute the command shown in the graphic below.



**Congratulations**, you have now successfully configured your SCO server to print through RPM. If you have different users logging in, you may need to modify their profile.